

## Work experience is changing!

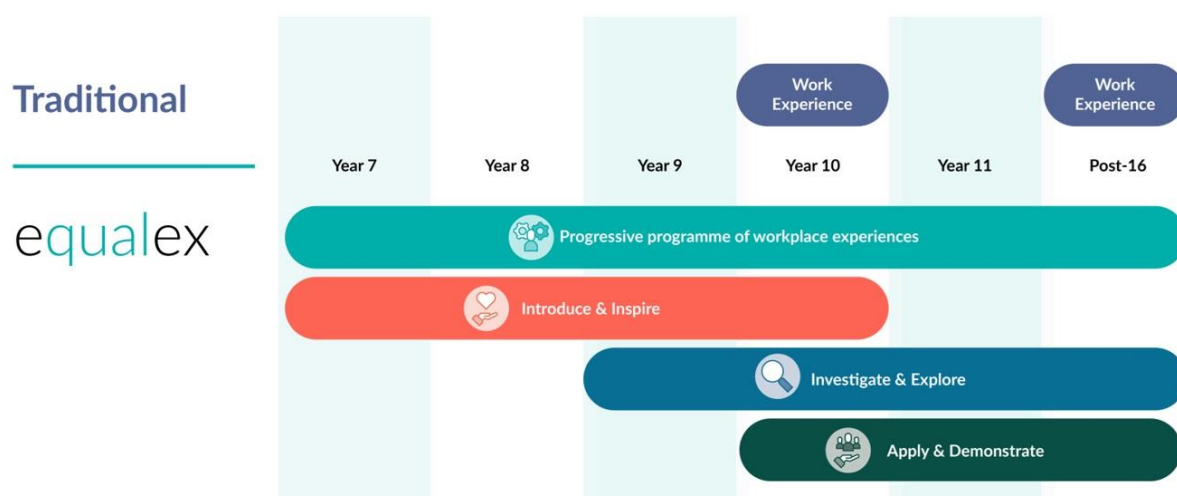
Modern work experience should guarantee every young person access to high-quality, multiple workplace experiences, totalling 10 days' worth throughout secondary education.

Work experience is now going to be delivered over the full span of secondary education, rather than the current week that typically takes place in year 10.

Short, exploratory work experience sessions will be offered to young people in years 7-9 to give them encounters with a wide variety of organisations and industries to help them develop career interests for themselves. These interests will then be built upon from year 10 to provide placements that are aligned with their interests.

This modern work experience approach, known as **equalex** and developed by the Careers and Enterprise Company, will facilitate a variety of experiences starting early, connecting education and young people with industry and unlocking the skills and opportunities of the future workforce.

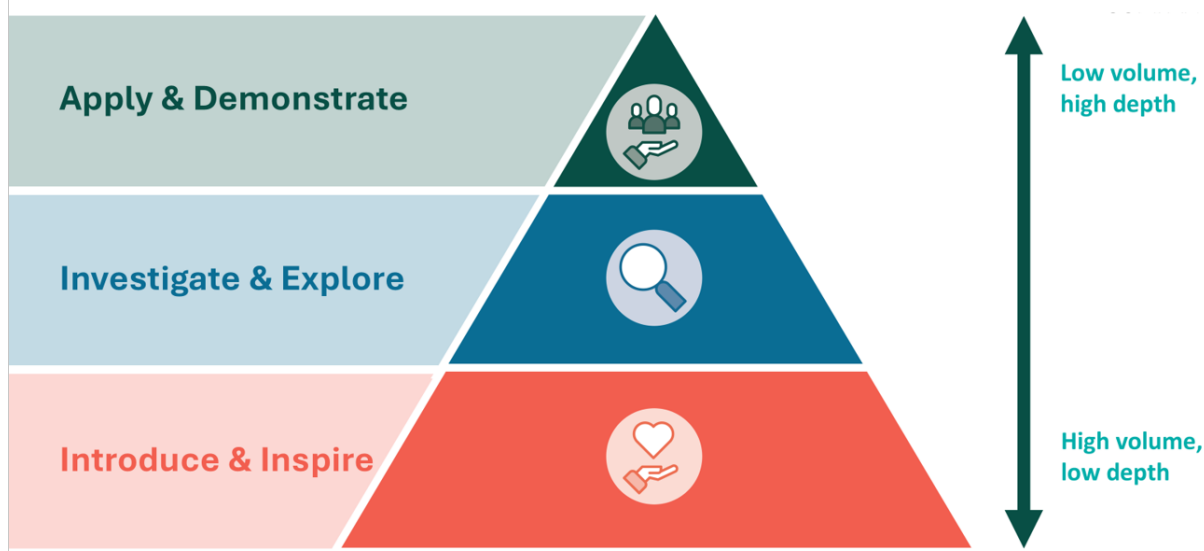
Here is a [short video about the changes](#).



### What is equalx?

- A framework of structured, progressive learning outcomes to raise the quality of work experience for learners.
- A multi-year, multi-experience model supported by the curriculum and accessible to ALL learners.
- A tiered approach providing a structure offering breadth and depth of workplace experiences.

### equalex: A progressive approach



### What does this mean for employers?

Businesses are integral to the success of modern work experience. The involvement of employers is incredibly valuable for young people, as well as providing the business an opportunity to promote their own organisation and industry to the next generation of employees.

Employers can adopt the flexible model to support activity in a way which meets their needs as a business rather than only being able to engage in a resource intensive 1-2-1 week-long placement in the summer.

High quality work experience helps young people to make informed choices and improve career readiness and employability by offering multiple, variable and targeted experiences throughout their education journey.

If you would like to get involved in supporting modern work experience, we would love to hear from you. Please email [careershub.east@redbridge.gov.uk](mailto:careershub.east@redbridge.gov.uk) for further information.

### While you're here...

To understand more about how to support schools and colleges, you can use the Careers and Enterprise Company's free [Employer Standards framework](#) which has been designed for any employer to self-assess and maximise their careers education outreach impact.